

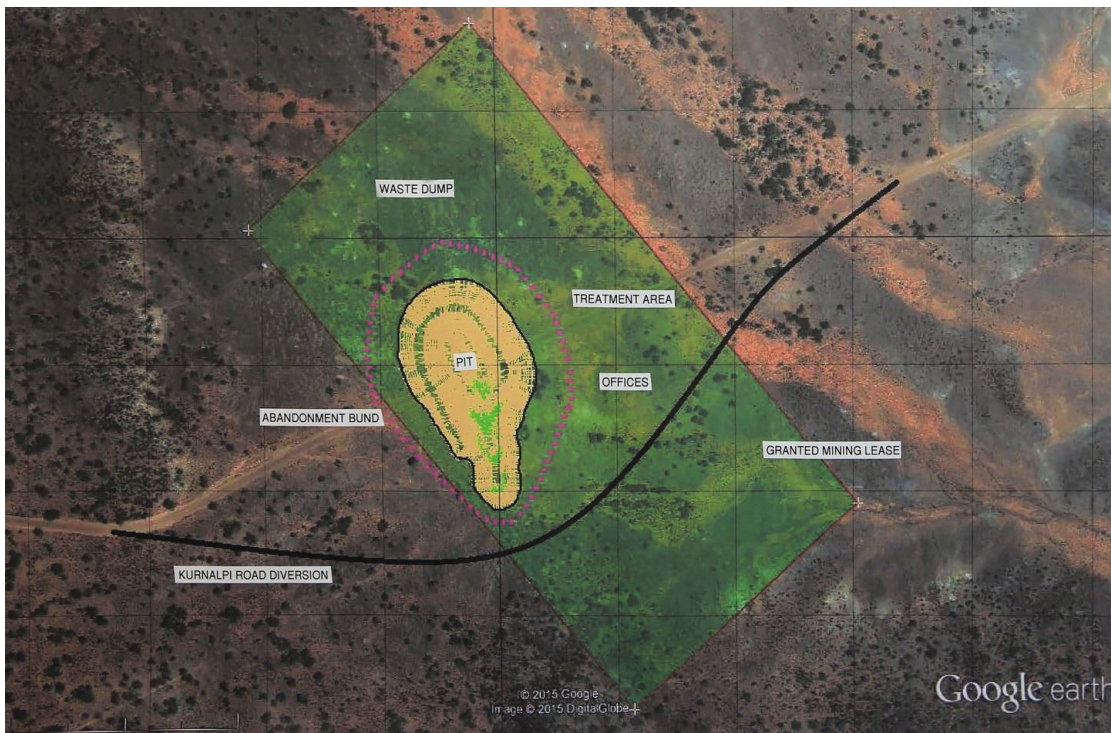
26 July 2016

ASX Release

## ROAD RE-ALIGNMENT COMMENCES FOR NEW PENNY'S FIND GOLD MINE

Empire Resources Ltd is pleased to announce that Cardno Spectrum Surveyors of Kalgoorlie has been commissioned to commence survey work on the road re-alignment required at the Company's pending Penny's Find gold mine, 50km northeast of Kalgoorlie, WA.

The new road is expected to be completed in less than 6 weeks. The realignment was necessary as the old route traversed the footprint of the designed open-pit targeted for first mining later this year. On completion of the road diversion, the Company expects mine development to commence immediately



**DAVID SARGEANT**  
**MANAGING DIRECTOR**  
July 2016

For further information on the Company, David Sargeant – Managing Director  
Tel: +61 8 9361 3100 or  
Visit: [www.resourcesempire.com.au](http://www.resourcesempire.com.au)