

ACN 092 471 513

3 May 2017

ASX Release

## **UPDATE – NEW W.A. GOLD MINE**

### **Key pre-mining work completed at Penny's Find**

A key pre-ore mining task for WA's newest gold mine, the pre-strip of top soil cover, has been completed at Empire Resources Limited's ('Empire', ASX code: ERL) new Penny's Find gold mine, 50km northeast of Kalgoorlie in Western Australia.

The Company announced today that all clearing of the top soil was completed and stockpiled with the mine area now being prepared for first mining, including surveying the key open pit boundaries and outlines of final waste dumps.

Safety bunds have been constructed around key infrastructure and flood mitigation channels finalised.

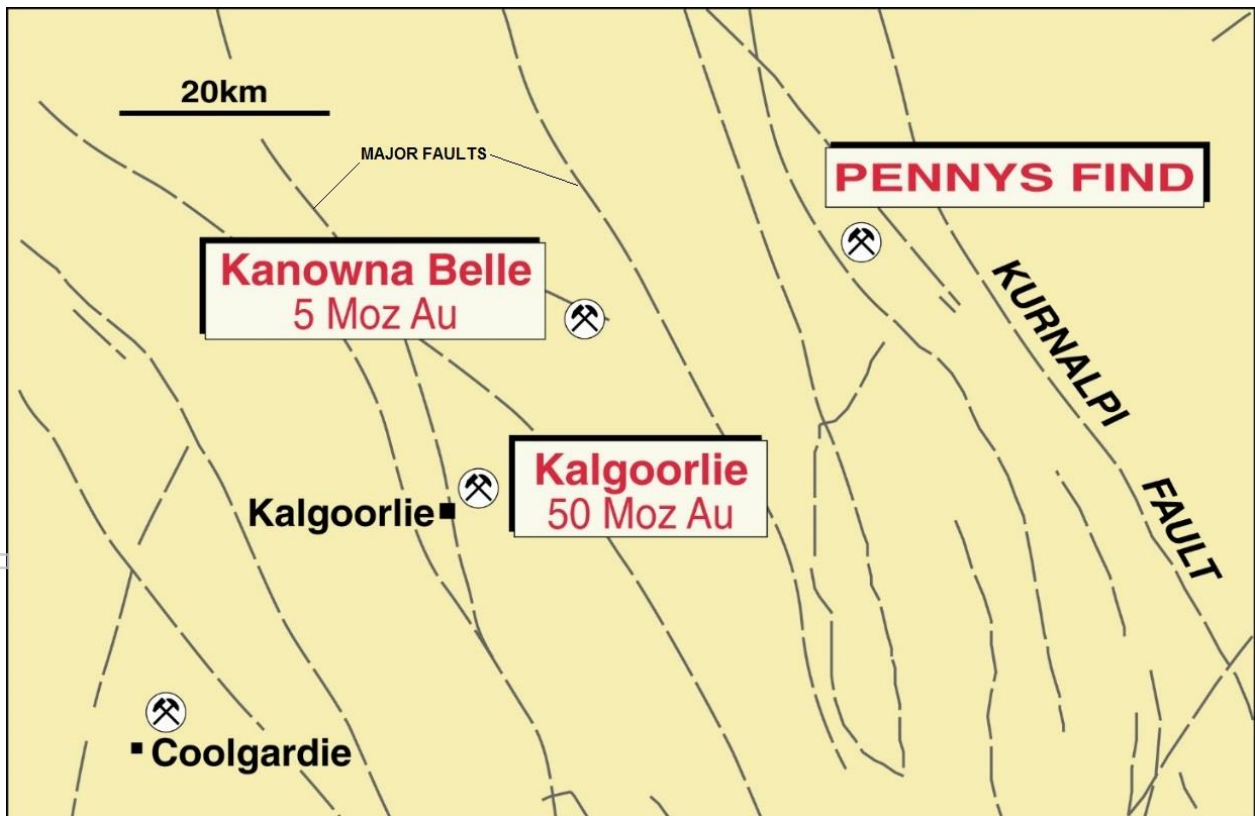
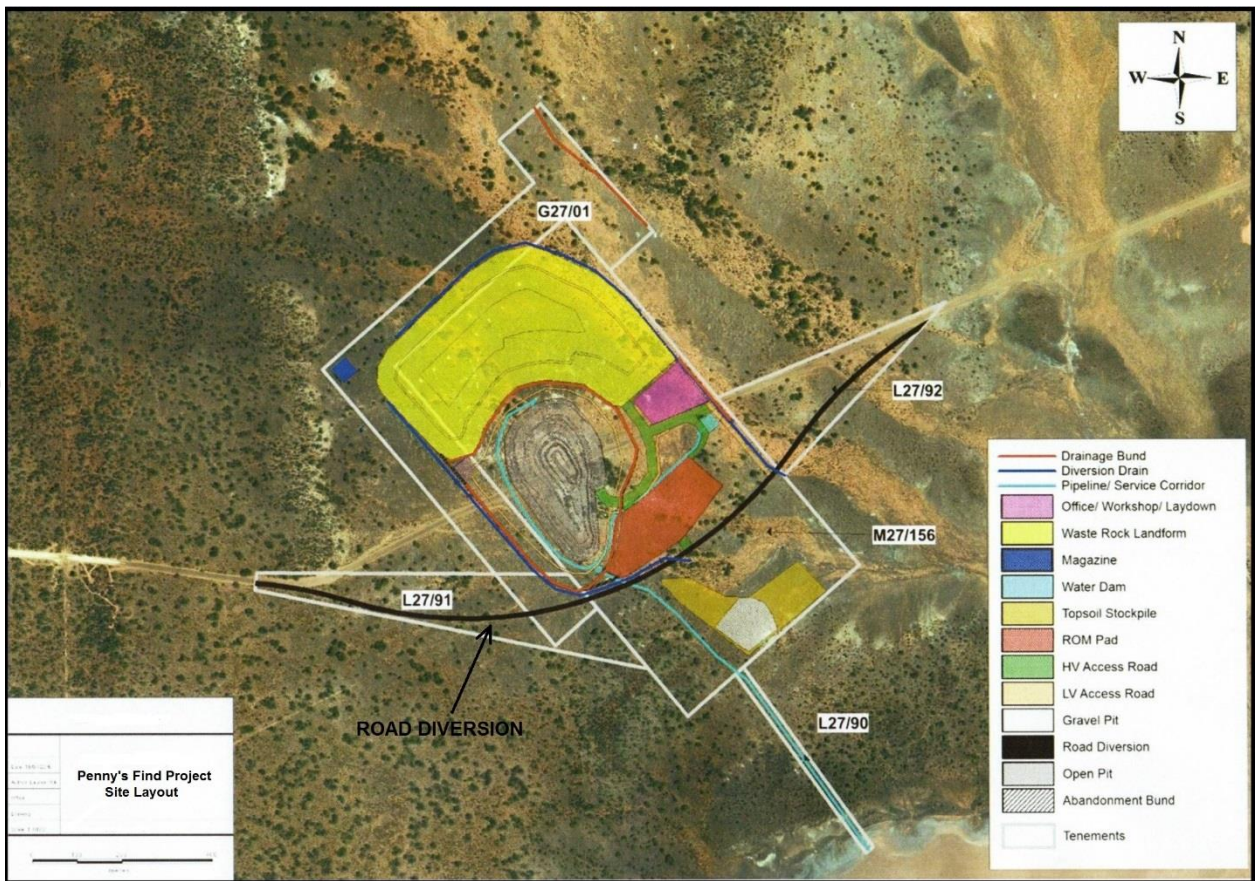
The only principle outstanding infrastructure item awaiting installation is the mine's fuel tank, due to arrive later this week.

All other mining infrastructure is completed including all power and water connections to mine facilities.

The mining fleet is continuing to mobilise on site with the first primary excavation unit going through its commissioning stages.

For personal use only

For personal use only



**DAVID SARGEANT**  
**MANAGING DIRECTOR**  
May 2017

For further information on the Company,  
Tel: +61 8 9361 3100 [www.resourceempire.com.au](http://www.resourceempire.com.au)